

KU[®] 44X

Cavi unipolari con tensione nominale 600V per alimentazione delle pompe sommerse
 Thermoset insulated wire rated 600V to feed submersible pumps

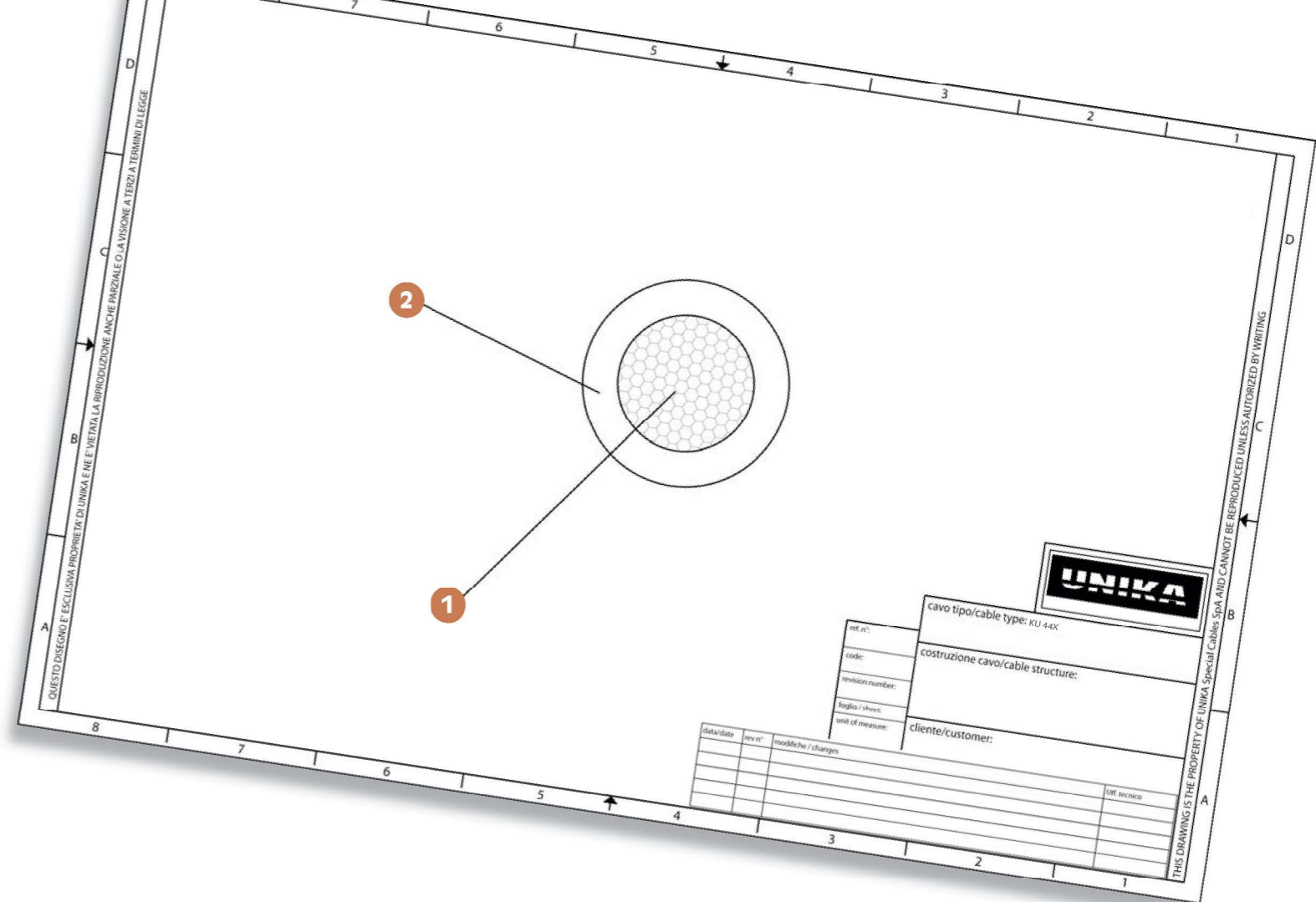


UNIKA (Italy) - E325307 (UL) SUBMERSIBLE PUMP CABLE xx AWG Type XHHW-2 or XHHW or XHH or SIS 600V



	Dati tecnici	Technical data
Conduttore Conductor	1 Trefolo a corda di rame rosso o stagnato	Bare or tinned copper, bunch stranded
Isolamento Insulation	2 XLPE ritardante la fiamma halogen - free secondo tab.11 UL 44 (tipo XL)	Flame retardant cross-linked halogen free compound according to table 11 UL 44 (type XL)
Identificazione Core identification	Vari colori	Different colours
Riunitura delle anime Single core assembly for "Submersible Pump Cable"	Da 2 a 6 anime riunite insieme senza guaina esterna	From two up to six wires cabled of type XHH or XHHW or XHHW-2 together without overall jacket
Marcatura Marking	UNIKA (Italy) - E325307 (UL) SUBMERSIBLE PUMP CABLE xx AWG Type XHHW-2 or XHHW or XHH or SIS 600 V - production date - traceability code	UNIKA (Italy) - E325307 (UL) SUBMERSIBLE PUMP CABLE xx AWG Type XHHW-2 or XHHW or XHH or SIS 600 V - production date - traceability code
Temperatura minima d'installazione Minimum installation temperature	-25°C	- 25°C
Temperatura minima di funzionamento Minimum operating temperature	-40°C	- 40°C
Raggio minimo di curvatura Minimum bending radius	3D	3D
Comportamento alla fiamma Fire behaviour	Test orizzontale	Horizontal flame test
Campo di approvazione Range of approval	Da AWG14 fino al kcmil 2000 In ogni colore (tipo SIS fino all' AWG4/0); sezioni intermedie quali AWG13, AWG11,...sono disponibili	From AWG14 up to kcmil 2000, In any colour (type SIS up to AWG 4/0); Intermediate cross-section, such as AWG13, AWG11,... are available

tipo type	tensione operating voltage	temperatura operating temperature
XHHW-2	600 V	90°C wet or dry
XHHW	600 V	75°C wet and 90°C dry
XHH	600 V	90° dry
SIS	600 V	90° dry



Code	Cross-section [AWG]	Nominal outer diameter (mm)	Copper weight [Kg/km]	Minimum insulation resistance at 15°C [GΩ.m]	Electrical resistance [Ω/km] at 20°C		Inductance [mH/km]	Ampacity at air temperature 30° based on NEC [A]
					Untinned	Tinned		
8A019	14	3,5	21	810	8,70	9,24	0,086	25
8A01A	12	4,0	33	680	5,48	5,81	0,076	30
8A01X	11	4,3	45	560	4,35	4,61	0,071	35
8A01B	10	4,6	52	560	3,45	3,66	0,067	40
8A01W	9	5,7	70	650	2,73	2,90	0,076	45
8A01D	8	6,1	81	650	2,16	2,30	0,072	55
8A01V	7	6,7	110	540	1,71	1,79	0,067	60
8A01D	6	7,1	125	540	1,37	1,42	0,064	75
8A01Z	5	8,0	170	450	1,08	1,12	0,061	80
8A01F	4	8,7	201	450	0,857	0,890	0,056	95
8A01U	3	9,5	281	400	0,679	0,707	0,053	110
8A01G	2	10,3	317	370	0,539	0,560	0,054	130
8A01H	1	12,0	400	390	0,431	0,449	0,051	150
8A01R	1/0	13,0	500	350	0,342	0,355	0,050	170
8A01J	2/0	14,3	631	320	0,271	0,282	0,047	195
8A01S	3/0	15,9	792	290	0,215	0,223	0,044	225
8A01T	4/0	17,7	996	260	0,170	0,177	0,042	260

Tolerance on outer diameter	Outer diameter (mm)
± 0,20	≤ 5
± 0,25	from 5,1 up to 10
± 0,30	from 10,1 up to 15
± 0,40	from 15,1 up to 25